

# PNEUMATIC CYLINDERS

Pneumatic systems for smoke and heat extraction



- The Redline cylinders are manufactured using corrosion-resistant materials.
- Suitable for smoke and heat exhaust systems according to the UNI EN 12101-2 standard.
- Double action cylinders, they can open and close.
- Provided with a mechanical locking device in the end stroke positions. It can be pneumatically or manually (pressing the corresponding end button) unlocked.
- On request (min. 50 pieces):
  - any intermediate stroke
  - rear feeding
  - cylinders without locking device
- Fixing brackets, accessories and connectors must be ordered separately
- The Redline cylinders can be used for ventilation where a compressed air system is available
- The installation of two cylinders on the same vent requires the version without locking device (stroke 500mm part No.40344H – stroke 700mm part No 40610F)

BORE	35 mm
ROD	Ø 12 stainless steel
MAX WORKING PRESSURE	20 bar
TEMPERATURE RANGE	- 30°+ 120°C
FEED	front
THRUST	1900 N a 20 bar
LOCK RESISTANCE	3000 N up to 300°C

PART No.	STROKE 300 mm	STROKE 500 mm	STROKE 700 mm	STROKE 1000 mm
	40083L	40085N	40087P	40090K

## Accessories



### PIVOT NIPPLE WITH FLOW LIMITING DEVICE

PART NO. 40424I

It is necessary for the cylinder assembly with the bracket.

The flow limiting device allows to reduce the speed during the window opening.



### SYNERIZED FLOW LIMITING DEVICE

PART NO. 41225V

More effective than the standard device, where a more smooth opening is required. It can be installed on opening or closing side.



### ROTATING NIPPLE

PART NO. 40356N

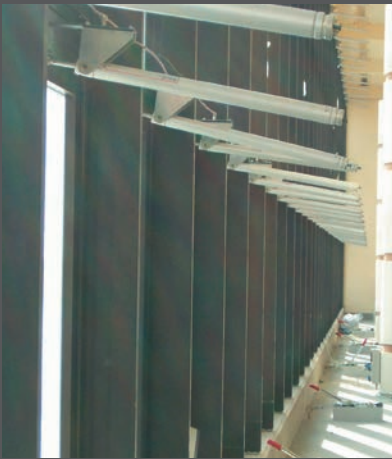
It allows the ø 6x4 mm copper tube connection and is necessary for the cylinder assembly with the bracket.

### NIPPLE WITH FLOW LIMITING DEVICE

PART NO. 36924K

The same as part No. 40356N but with flow limiting device.

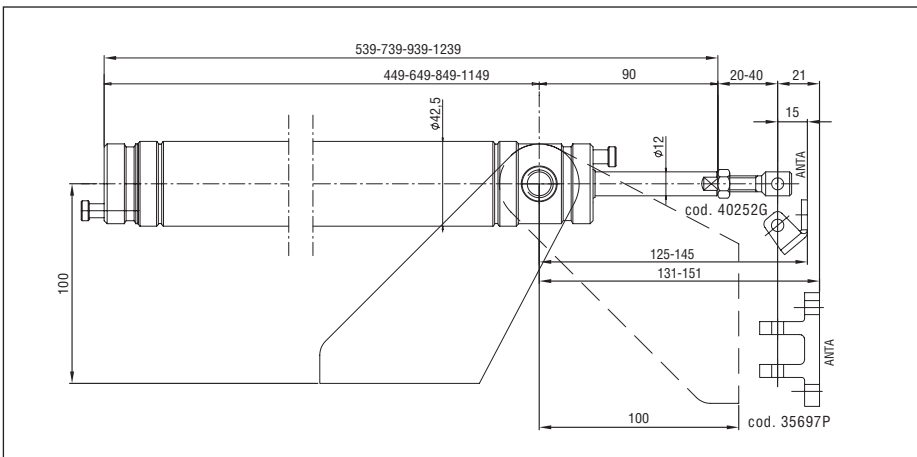
## Installation examples



Installation on top hinged window with connection to compressed air system



On dome with thermal valve

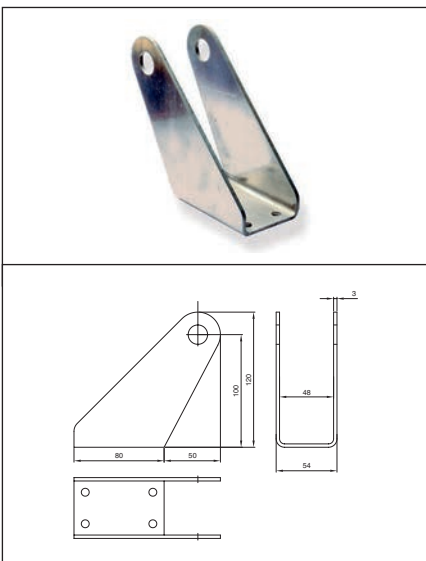


Actuators dimensions

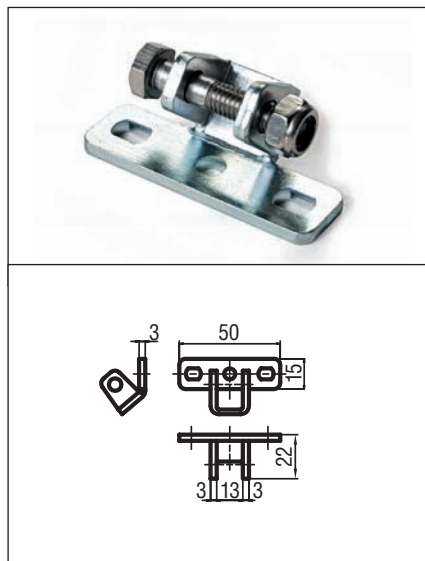
### SPECIFICATION PROSPECTS

Pneumatic cylinder Ultraflex Control Systems - Red Line, used in smoke and heat extraction systems according to UNI EN 12101-2 standard. Aluminium casing. The standard version is provided with mechanical locking device in the end stroke positions in order to keep the windows or domes open even without air pressure. It is possible the direct installation of the thermal valve.

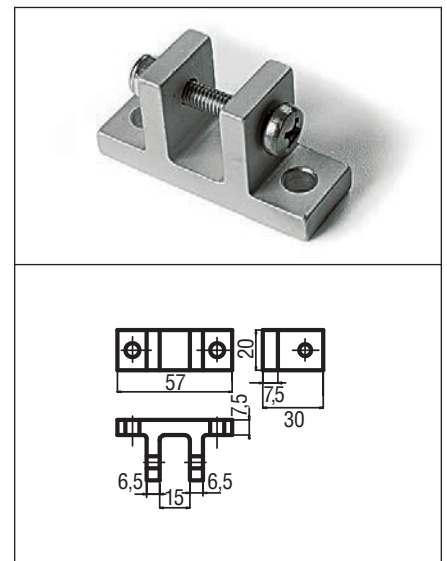
**⚠** The instructions for a safe installation are included in the section “SECURITY WARNINGS”



Aluminium front bracket part No. 356960  
It allows the fixing of the cylinder to the frame and the cylinder rotation during the opening phase.  
The bracket is connected to the cylinder by pivot or nipples.



Galvanized steel connector (cylinder-vent) for ventilation part No. 40252G



Aluminium connector (cylinder-vent) part No. 35697P