

TWIN QUASAR - TWIN VEGA

Two-chains actuator

Twin Quasar : Force 600 N - Maximum stroke 500 mm

Twin Vega: Force 600 N - Maximum stroke 300 mm



TECHNICAL DATA

	TWIN QUASAR AC VERSION	TWIN QUASAR DC VERSION	TWIN VEGA DC VERSION
VOLTAGE SUPPLY	100 Vac - 240 Vac	24 Vdc ± 10%	24 Vdc ± 10%
CURRENT ABSORPTION (max load)	0,9 A - 0,4 A	1,8 A	1,4 A
OPERATION	-	polarity inversion	polarity inversion
MAX FORCE	600 N	600 N	600 N
SPEED	~15 mm/s	~15 mm/s	~9 mm/s
LOCKING FORCE	5000 N	5000 N	5000 N
DUTY CYCLE	50%	50%	50%
PARALLEL CONNECTION	Yes	Yes	Yes
LIMIT STOP	Electronic	Electronic	Electronic
SAFETY STOP	Electronic	Electronic	Electronic
PROTECTION CLASS	IP40	IP40	IP30

MAIN FEATURES

- The strongest chain actuator: 600 N
 - Chains in double stainless steel links.
 - Equipped with an integrated speed synchronization control board.
 - Quick and easy installation: the manual closing position regulation is not required. The stop in closing position is regulated by an electronic limit switch control.
 - Electronic stop in the intermediate positions in case of overload.
- **F-SIGNAL** versions provide opening and closing feedback signal (free potential, maintained contact), activated by the current limit.
- Suitable for combined installation with the additional locking device **E-LOCK** (see related data sheet).

INSTALLATION REMARKS

- In case of vents with four-bar hinges, please contact our Technical Dept.
- If installed on PVC windows, the profile has to be reinforced.
- In case of Building Management System control, avoid repetitive commands in the same direction.

For further information contact our Tech. Dept.

24 Vdc version is suitable for installation on **Smoke and Heat Exhaust Ventilators (SHEV)** in conformity to European Standard **EN 12101-2**, tested by Istituto Giordano.

The BMSline versions are fully programmable (stroke, speed, force, ...); different scenarios are selectable with a connection to a computer through dedicated software. See BMSline section.

Part No. for AC VERSIONS (100 Vac - 240 Vac)

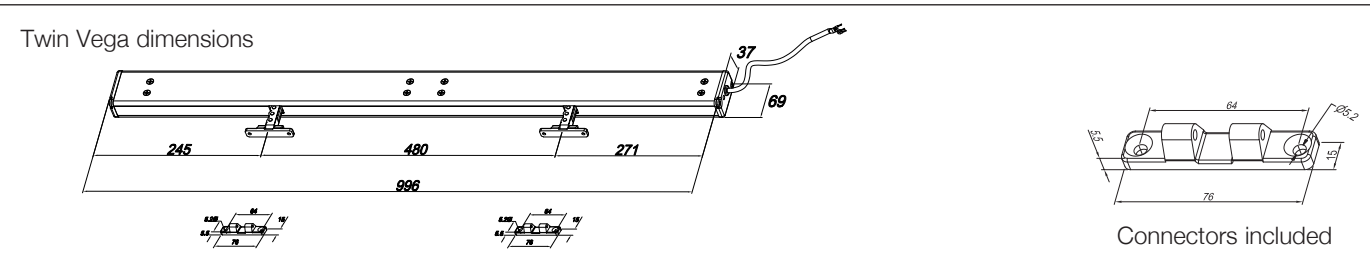
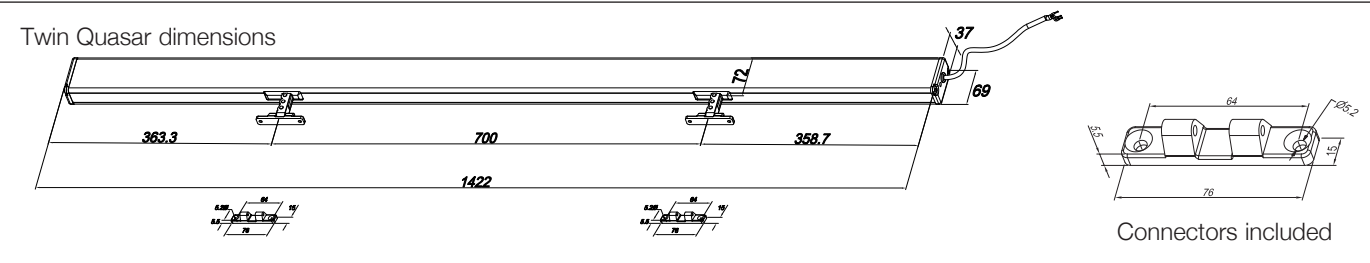
MODEL	STROKE	FEEDBACK	CABLE	COLOUR	PART No.
TWIN QUASAR AC	500 mm	-	3 m 3 wires + earth	SILVER ANODIZED BLACK RAL 9005 WHITE RAL 9010	40989D 40990E 40991F

Part No. for DC VERSIONS (24 Vdc ±10%)

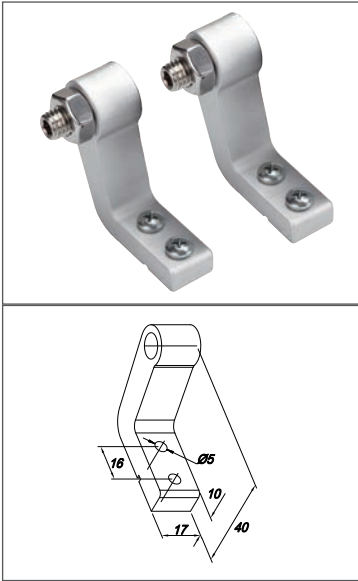
MODEL	STROKE	FEEDBACK	CABLE	COLOUR	PART No.
TWIN QUASAR DC	500 mm	-	3 m 2 wires	SILVER ANODIZED BLACK RAL 9005 WHITE RAL 9010	40992G 40993H 40994I
TWIN QUASAR DC F-SIGNAL	500 mm	free potential open/close	3 m 5 wires	SILVER ANODIZED BLACK RAL 9005 WHITE RAL 9010	41310C 41311D 41312E
TWIN VEGA DC	300 mm	-	3 m 2 wires	SILVER ANODIZED BLACK RAL 9005 WHITE RAL 9010	41245P 41246Q 41247R
TWIN VEGA DC F-SIGNAL	300 mm	free potential open/close	3 m 5 wires	SILVER ANODIZED BLACK RAL 9005 WHITE RAL 9010	41313F 41314G 41315H

NOTE: brackets not included - to be ordered separately

TWIN QUASAR AND TWIN VEGA



Accessories

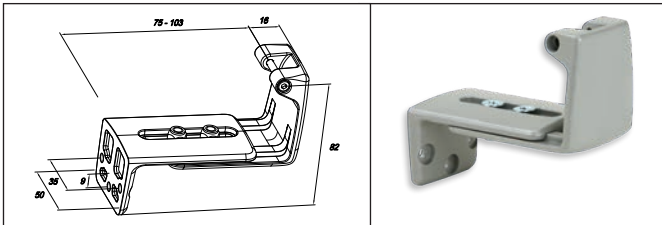


Pivoting bracketst (to be ordered separately)
GREY part No. 41906N
BLACK part No. 41907O
WHITE part No. 41908P

30 GREEN LINE



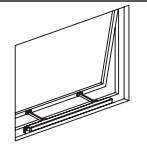
"C" pivoting brackets for bottom hinged windows
(to be ordered separately):
GREY anodized aluminium part No. 41197Z
BLACK RAL 9005 part No. 41198A
WHITE RAL 9010 part No. 41199B



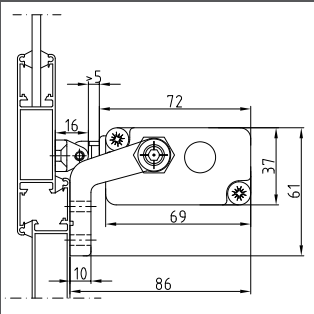
Aluminium adjustable "Z" bracket for bottom hinged window
GREY part No. 41709Z
BLACK part No. 41710A
WHITE part No. 41711B

Installation examples

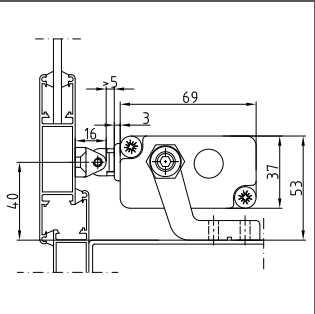
Outward



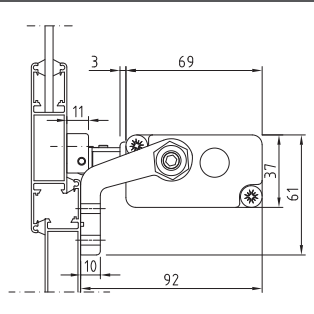
Top hinged windows Twin Quasar



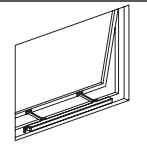
On the frame with pivoting brackets



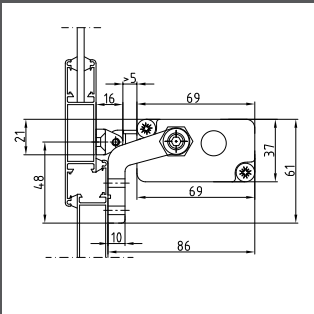
On windowsill with pivoting brackets



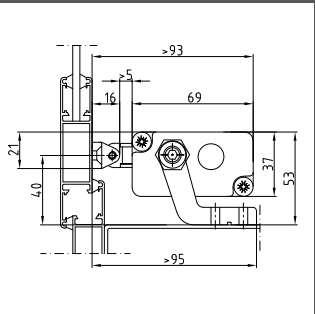
On windowsill with flat connector



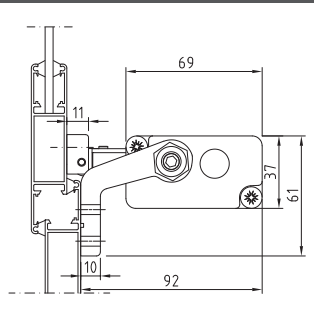
Top hinged windows Twin Vega



On the frame with pivoting brackets

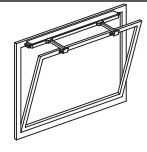
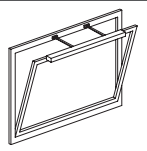


On windowsill with pivoting brackets

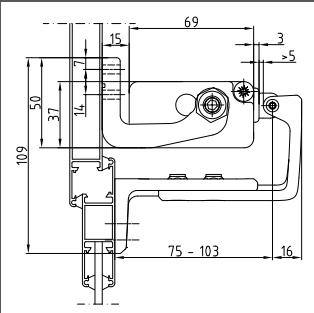


On windowsill with flat connector

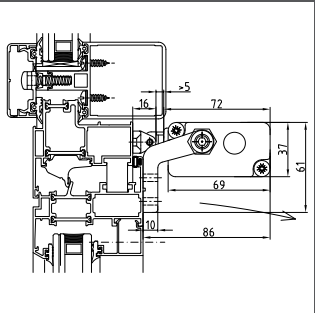
Inward



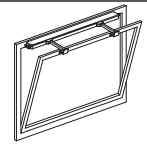
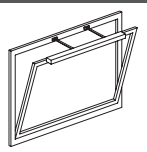
Bottom hinged windows Twin Quasar



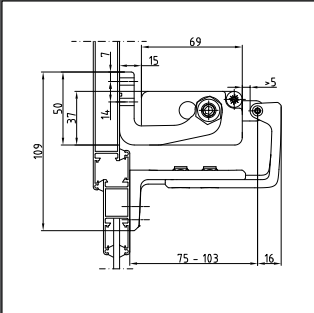
On the frame with brackets for bottom hinged windows



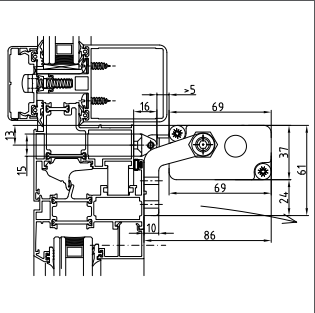
On the vent with pivoting brackets



Bottom hinged windows Twin Vega



On the frame with brackets for bottom hinged windows



On the vent with pivoting brackets

⚠ The instructions for a safe installation are included in the section "SECURITY WARNINGS"

SPECIFICATION PROSPECT

Electric chain actuator Ultraflex Control Systems named Twin Quasar with two chains in double stainless steel links and electronic circuit for the two internal motors control. Force 600 N. Stroke 500 mm. Voltage supply 100-240 Vac or 24 Vdc. Electronic limit stop and electronic stop in the intermediate positions in case of overload. Parallel connection. Aluminium casing anodized or painted.

Electric chain actuator Ultraflex Control Systems named Twin Vega with two chains in double stainless steel links and electronic circuit for the two internal motors control. Force 600 N. Stroke 300 mm. Voltage supply 24 Vdc. Electronic limit stop and electronic stop in the intermediate positions in case of overload. Parallel connection.