

ENTRAPMENT PROTECTION SYSTEMS EPS

Power actuated window protection system



Infra-red sensor
part No 41343J



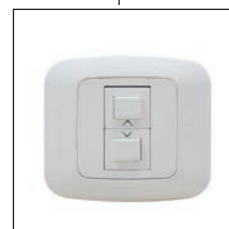
Quasar
Vega



Power supply



Control panel



Push button part No 41013B

EPS Entrapment Protection System provides protection to people close to the automated window area, also for children or people with reduced attention and response capacity, above all in case of accessible windows or with automatic control without visual contact.

The infra-red active sensor, or other presence sensor, gives a signal to the control unit in case of foreign presence; the EPS system reverses the closing movement for 3 seconds to release possible objects or body parts entrapped in the window, then stops the power to the actuator.

EPS can also provide the visual and acoustic signal in case of intervention of the presence sensor; moreover it is possible to continue the closing action as soon as the foreign presence disappears. It is possible to connect more than one actuator and/or sensor to the control unit.

⚠ The instructions for a safe installation are included in the section "SECURITY WARNINGS"

EPS 24 Vdc

PART No. 41342I

Control unit for 24 Vdc actuators.
Inputs: feeder; EFC control panel; push button or BMS system.

Dimensions: 115 x 155 x 75 mm



EPS 230 Vac

PART No. 41341H

Control unit for 230 Vac actuators.
Inputs: line – push button or BMS system.

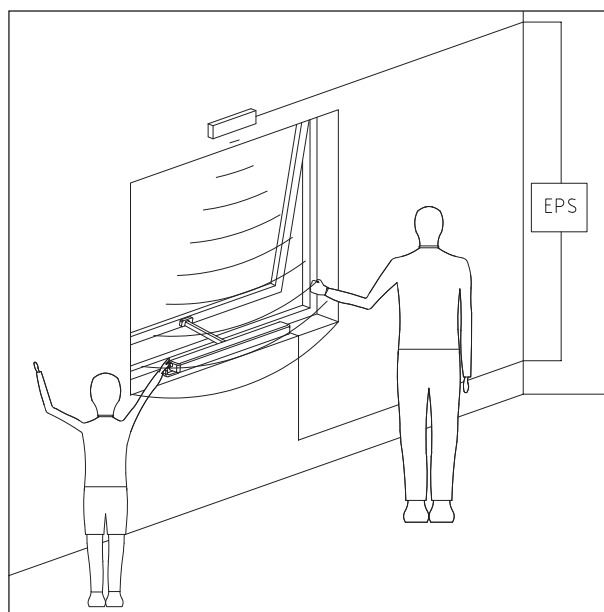
Dimensions: 115 x 155 x 75 mm

PRESENCE SENSOR

PART No. 41343J

The infra-red presence sensor gives a signal to the EPS control unit in case of foreign presence

Dimensions: 221 X 63 X 30 mm



CONTROL ACCESSORIES

Accessories for electric actuators



FLUSH MOUNT DOUBLE PUSH BUTTON

PART No. 41013B
For all the actuators with 3 wires operation (230Vac actuators).



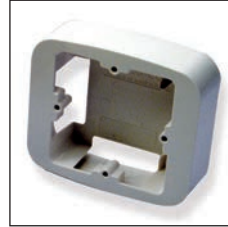
FLUSH MOUNT BIPOLAR PUSH BUTTON

PART No. 41014C
For the actuators with polarity inversion operation (24Vdc actuators).
Max current 5 A.



WALL PUSH BUTTON WITH TWO BUTTONS

PART No. 41019H
For all the actuators with 3 wires operation (230Vac actuators).
Dimensions: mm 80x80x30



BOX FOR FLUSH MOUNT PUSH BUTTON

PART No. 83475J
For flush mount push button.



COUPLING CONTROL UNIT CP230

PART No. 41089V
It permits to control a couple of 230 Vac actuators (STILE, SINTESI 2000, SUPERMASTER 230 Vac, MAX). In case of sudden failure, or blockage of any of the two actuators the other will also be stopped. In case of automatic control (BMS-Building Management System) avoid repetitive commands.



RELAIS BOX (RB24-E)

PART No. 40995J
It allows to control 24 Vdc actuators (at polarity inversion) through a standard 3 wires operation (open-close-common) and a voltage supply up to 20 A in two outputs current absorption.
It can also be connected to control units UCS-CRM1 to expand the output load.
Dimensions: mm 154x113x75



SWITCHING POWER SUPPLY 24 Vdc

| | | | | |
|----------------|----------------------|------------------------|------------------------|-----------------------|
| ITEM CODE | 40775P | 41526Y | 40893D | 40894E |
| INPUT VOLTAGE | 85 - 264 Vac | 90 - 264 Vac | 85 - 264 Vac | 85 - 264 Vac |
| OUTPUT VOLTAGE | 24 Vdc | 24 Vdc | 24 Vdc | 24 Vdc |
| OUTPUT CURRENT | 3A (nominal current) | 3.8A (nominal current) | 8,4A (nominal current) | 20A (nominal current) |
| DIMENSIONS | 199x99x50 mm | 91x90x55,6 mm | 199x99x50 mm | 185x120x92 mm |
| | | DIN rail module | | |



WEATHER CONTROL UNIT FOR 230 Vac ACTUATORS

PART No. 40490Y
The kit includes the operating device with anemometer and rain sensor that operates automatically in case of high wind intensity or rain. It controls the closing of one or more 230 Vac actuators, with a maximum total current absorption inferior to 2.25 A. A register permits to determine the wind sensibility.
Dimensions: ø 150 mm x h 40 mm



RADIO RECEIVER 230 Vac

PART No. 41735Z
Radio receiver for 230Vac actuator. Includes two inputs for open and close button.
Power supply: 230Vac
Power: 350W
Dimension: 125 x 38 x 20 mm
IP44

RADIO RECEIVER 24 Vdc

PART No. 41734Y
Radio receiver for 24Vdc actuator. Includes two inputs for open and close button.
Power Supply: 24Vdc
Nominal current: 4,0A
Dimension: 125 x 38 x 20
IP44



RADIO TRANSMITTER 6 CH

PART No. 41729T
Compatible with Stile-RF and Radio Receiver 230 Vac and 24 Vdc.
6 CH (open-stop-close) can operate up to 6 CH simultaneously and/or independently.



TESTING KIT

PART No. 42073Y
Voltage supply input: 100-250Vac - 50Hz
Voltage supply output: +/- 24Vdc
Output operation: by polarity inversion
Nominal current: 13A
Push button: integrated

The instructions for a safe installation are included in the section "SECURITY WARNINGS"